



## Test Report

No.: GZ0701003380/CHEM

Date: JAN 15, 2007

Page 1 of 3

FOSHAN NOBLE METAL TECHNOLOGY CO.,LTD.  
NO.23, NORTH FENJIANG ROAD, FOSHAN, GUANGDONG, P.R.CHINA

The following sample(s) was/were submitted and identified on behalf of the applicant as AgNi (10)

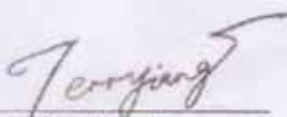
SGS Ref No. : GZ10221564EC-7.1  
Manufacturer : FOSHAN NOBLE METAL TECHNOLOGY CO.,LTD.  
Sample Receiving Date : JAN 09, 2007  
Testing Period : JAN 09, 2007 TO JAN 15, 2007

Test Requested : To determine the Cadmium, Lead, Mercury & Hexavalent Chromium content in the submitted sample.

Test Method : With reference to IEC 62321 Ed.1 111/54/CDV  
Procedures for the Determination of Levels of Regulated Substances in Electrotechnical Products  
(1) Determination of Cadmium by ICP.  
(2) Determination of Lead by ICP.  
(3) Determination of Mercury by ICP.  
(4) Determination of Hexavalent Chromium by Colorimetric Method.

Test Results : Please refer to next page.

Signed for and on behalf of  
SGS-CSTC Ltd.

  
Jiang YongPing, Terry  
Sr. Engineer



## Test Report

No.: GZ0701003380/CHEM

Date: JAN 15, 2007

Page 2 of 3

Test results by chemical method (Unit: mg/kg)

Test Item(s):	Method (refer to)	No.1	MDL
Cadmium(Cd)	(1)	N.D.	2
Lead (Pb)	(2)	N.D.	2
Mercury (Hg)	(3)	N.D.	2
Hexavalent Chromium (CrVI) by Spot test	(4)	Negative	See Note 4

### Test Part Description:

No.1 Silvery metal wire

Note : 1. mg/kg = ppm

2. N.D. = Not Detected (< MDL)

3. MDL = Method Detection Limit

#### 4. **Spot-test:**

Negative = Absence of CrVI coating, Positive = Presence of CrVI coating;

(The tested sample should be further verified by boiling-water-extraction method if the spot test result cannot be confirmed.)

#### **Boiling-water-extraction:**

Negative = Absence of CrVI coating

Positive = Presence of CrVI coating; the detected concentration in boiling-water-extraction solution is equal or greater than 0.02 mg/kg with 50 cm<sup>2</sup> sample surface area.



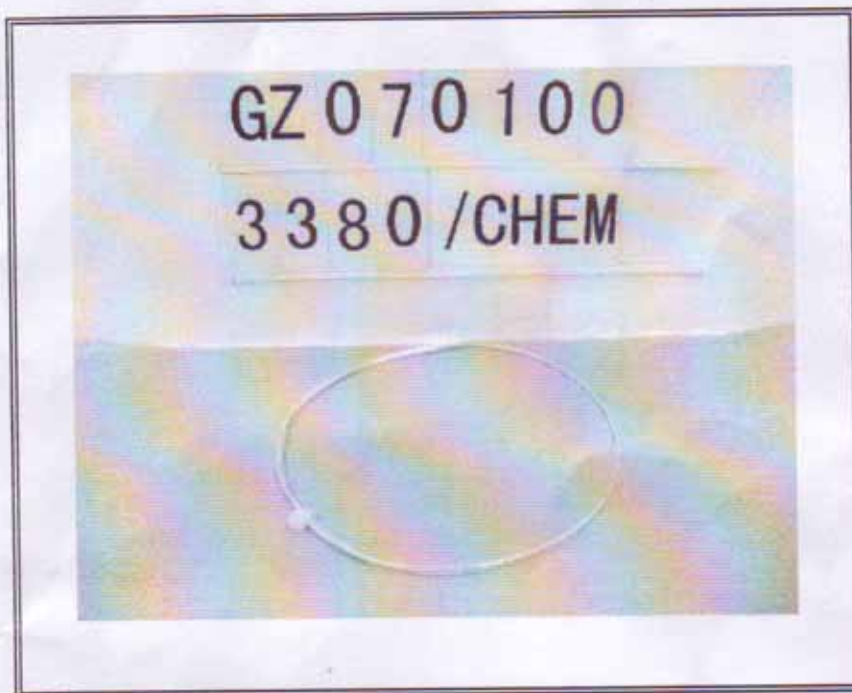
## Test Report

No.: GZ0701003380/CHEM

Date: JAN 15, 2007

Page 3 of 3

Sample photo :



SGS authenticate the photo on original report only

\*\*\* End of Report \*\*\*

The release of this electronic report by SGS RSTS Database system is subject to the terms and conditions of SGS RSTS Database service and those applied to the original hardcopy report. For the purpose of your reference only, this electronic copy is in accordance with the issued report. User of the electronic report shall note that SGS authenticates only the electronic report directly downloaded from SGS RSTS Database system.



## Test Report

No.: GZ0703040041/CHEM

Date: MAR 28, 2007

Page 1 of 3

DICGU ELECTRONICS CO., LTD.

LISHAN SOUTH RD., SHIWAN, BOLUO, HUI ZHOU, GUANG DONG, CHINA

The following sample(s) was/were submitted and identified on behalf of the applicant as SUS304

Client Reference: AV10011-1-80/20070109

SGS Ref No. : SZ10302159-9.4  
 Supplier : UNION SPRING METAL CO., LTD  
 Sample Receiving Date : MAR 22, 2007  
 Testing Period : MAR 22, 2007 TO MAR 28, 2007

Test Requested : In accordance with the RoHS Directive 2002/95/EC, and its amendment directives.

Test Method : With reference to IEC 62321 Ed.1 111/54/CDV  
 Procedures for the Determination of Levels of Regulated Substances in Electrotechnical Products  
 (1) Determination of Cadmium by ICP.  
 (2) Determination of Lead by AAS & ICP.  
 (3) Determination of Mercury by ICP.  
 (4) Determination of Hexavalent Chromium by Colorimetric Method.

Test Results : Please refer to next page.

Conclusion : Based on the performed tests on submitted sample(s), the results **comply with** the RoHS Directive 2002/95/EC and its subsequent amendments.

Signed for and on behalf of  
 SGS-CSTC Ltd.



Jiang YongPing, Terry  
 Sr. Engineer

This Test Report is issued by the Company subject to its General Conditions of Service printed overleaf or available on request and accessible at [www.sgs.com](http://www.sgs.com). Attention is drawn to the limitations of liability, indemnification and jurisdictional issues defined therein. Unless otherwise stated the results shown in this test report refer only to the sample(s) tested. This test report cannot be reproduced, except in full, without prior written permission of the Company. Any unauthorized alteration, forgery or falsification of the content or appearance of this report is unlawful and offenders may be prosecuted to the fullest extent of the law.

Test results by chemical method (Unit: mg/kg)

Test Item(s):	Method (refer to)	No.1	MDL	RoHS Limit
Cadmium(Cd)	(1)	N.D.	2	100
Lead (Pb)	(2)	N.D.	2	1000
Mercury (Hg)	(3)	N.D.	2	1000
Hexavalent Chromium (CrVI) by Spot test	(4)	Negative	See Note 4	#

### Test Part Description:

No.1 Silvery metal spring

Note : 1. mg/kg = ppm

2. N.D. = Not Detected (< MDL)

3. MDL = Method Detection Limit

4. **Spot-test:**

Negative = Absence of CrVI coating, Positive = Presence of CrVI coating;

(The tested sample should be further verified by boiling-water-extraction method if the spot test result cannot be confirmed.)

**Boiling-water-extraction:**

Negative = Absence of CrVI coating

Positive = Presence of CrVI coating; the detected concentration in boiling-water-extraction solution is equal or greater than 0.02 mg/kg with 50 cm<sup>2</sup> sample surface area.

5. # = Positive indicates the presence of CrVI on the tested areas and result be regarded as conflict with RoHS requirement.

Negative indicates the absence of CrVI on the tested areas and result be regarded as no conflict with RoHS requirement.

This Test Report is issued by the Company subject to its General Conditions of Service printed overleaf or available on request and accessible at [www.sgs.com](http://www.sgs.com). Attention is drawn to the limitations of liability, indemnification and jurisdictional issues defined therein. Unless otherwise stated the results shown in this test report refer only to the sample(s) tested. This test report cannot be reproduced, except in full, without prior written permission of the Company. Any unauthorized alteration, forgery or falsification of the content or appearance of this report is unlawful and offenders will be prosecuted to the fullest extent of the law.



Sample photo :



SGS authenticate the photo on original report only

\*\*\* End of Report \*\*\*

This Test Report is issued by the Company subject to its General Conditions of Service printed overleaf or available on request and accessible at [www.sgs.com](http://www.sgs.com). Attention is drawn to the limitations of liability, indemnification and jurisdictional issues defined therein. Unless otherwise stated the results shown in this test report refer only to the sample(s) tested. This test report cannot be reproduced, except in full, without prior written permission of the Company. Any unauthorized alteration, forgery or falsification of the content or appearance of this report is unlawful and offenders will be prosecuted to the fullest extent of the law.

## Test Report

No. EC405726800

Date: Mar 20 2007

Page 1 of 5

DICGU ELECTRONICS CO., LTD.  
LISHAN SOUTH RD  
SHIWAN, BOLUO  
HUI ZHOU, GUANGDONG  
CHINA

The following sample was submitted and identified on behalf of the client as :  
PLASBLACK

SGS Job No.	:	1059520
SGS Reference No	:	SZ10287687-4.4
Lot No	:	06120812
Supplier	:	TIEENG (ZHONGSHAN) RUBBER PLASTICS. LTD
Date of Sample(s) Received	:	MAR 13 2007
Testing Period	:	MAR 13 - 20 2007
Test Requested/ Test Method	:	<ul style="list-style-type: none"> <li>- In accordance with RoHS Directive 2002/95/EC, and its amendment directives. With reference to IEC 62321 (Ed. 1) 111/54/CDV. Procedures for the Determination of Levels of Regulated Substances in Electrotechnical Products.</li> <li>- Determination of Cadmium by ICP/ AAS. Determination of Lead by ICP/ AAS. Determination of Mercury by ICP/ AAS.</li> <li>- Determination of Hexavalent Chromium by colorimetric method (UV -VIS).</li> <li>- Determination of PBBs and PBDEs by GC-MS.</li> <li>- For other test: To determine Tetrabromobisphenol-A (TBBP-A) content in the submitted sample according to SGS In-house method (CTS-SL-229 -1), by GC-MS Technique.</li> </ul>



## Test Report

No. EC405726800

Date: Mar 20 2007

Page 2 of 5

Test Results : Please refer to next page.

Conclusion : - Based on the performed tests on submitted sample, the results comply with the RoHS Directive 2002/95/EC and its subsequent amendments.

Signed for and on behalf of  
SGS Hong Kong Ltd.

Wan Chi Wai Leo  
Technical Manager

This document is issued by the Company subject to its General Conditions of Service printed overleaf or available on request and accessible at [www.sgs.com](http://www.sgs.com). Attention is drawn to the limitations of liability, indemnification and jurisdictional issues defined therein. Unless otherwise stated: (a) the results shown in this document refer only to the sample(s) tested and (b) such sample(s) are retained for 30 days only. This document cannot be reproduced except in full, without prior approval of the Company. Any unauthorized alteration, forgery or falsification of the content or appearance of this report is unlawful and offenders may be prosecuted to the fullest extent of the law.



# Test Report

No. EC405726800

Date: Mar 20 2007

Page 3 of 5

## Test Results:

Test results by chemical method (Unit : mg/kg)

	1	MDL	Limit
Cadmium (Cd)	n.d.	2	100
Lead (Pb)	n.d.	2	1000
Mercury (Hg)	n.d.	2	1000
Hexavalent Chromium (CrVI) by colorimetric method	n.d.	2	1000
Sum of PBBs (Mono to Deca)	n.d.	-	1000
Monobromobiphenyl	n.d.	5	
Dibromobiphenyl	n.d.	5	
Tribromobiphenyl	n.d.	5	
Tetrabromobiphenyl	n.d.	5	
Pentabromobiphenyl	n.d.	5	
Hexabromobiphenyl	n.d.	5	
Heptabromobiphenyl	n.d.	5	
Octabromobiphenyl	n.d.	5	
Nonabromobiphenyl	n.d.	5	
Decabromobiphenyl	n.d.	5	
Sum of PBDEs (Note 4)	n.d.	-	1000
Sum of PBDEs (Mono to Deca)	n.d.	-	
Dibromodiphenyl ether	n.d.	5	
Monobromodiphenyl ether	n.d.	5	
Tribromodiphenyl ether	n.d.	5	
Tetrabromodiphenyl ether	n.d.	5	
Pentabromodiphenyl ether	n.d.	5	
Hexabromodiphenyl ether	n.d.	5	
Heptabromodiphenyl ether	n.d.	5	
Octabromodiphenyl ether	n.d.	5	
Nonabromodiphenyl ether	n.d.	5	
Decabromodiphenyl ether	n.d.	5	

## Note :

- (1) mg/kg = ppm
- (2) MDL = Method Detection Limit
- (3) n.d. = Not Detected
- (4) Sum of Mono to NonaBDE & according to 2005/717/EC DecaBDE is exempt.
- (5) - = Not Regulated
- (6) -- = Not Conducted

This document is issued by the Company subject to its General Conditions of Service printed overleaf or available on request and accessible at [www.sgs.com](http://www.sgs.com). Attention is drawn to the limitations of liability, indemnification and jurisdictional issues defined therein. Unless otherwise stated: (a) the results shown in this document refer only to the sample(s) tested and (b) such sample(s) are retained for 30 days only. This document cannot be reproduced except in full, without prior approval of the Company. Any unauthorized alteration, forgery or falsification of the content or appearance of this report is unlawful and offenders may be prosecuted to the fullest extent of the law.



## Test Report

No. EC405726800

Date: Mar 20 2007

Page 4 of 5

### Tetrabromobisphenol-A (TBBP-A)

	<u>CAS-No.</u>	<u>1</u>	<u>DL</u>
Tetrabromobisphenol-A (TBBP-A)	79-94-7	n.d.	5

#### Note :

- (1) Unit: mg/kg = ppm
- (2) DL = Detection Limit
- (3) n.d. = Not Detected

#### Sample Description

1 Black Plastic Pellet

This document is issued by the Company subject to its General Conditions of Service printed overleaf or available on request and accessible at [www.sgs.com](http://www.sgs.com). Attention is drawn to the limitations of liability, indemnification and jurisdictional issues defined therein. Unless otherwise stated: (a) the results shown in this document refer only to the sample(s) tested and (b) such sample(s) are retained for 30 days only. This document cannot be reproduced except in full, without prior approval of the Company. Any unauthorized alteration, forgery or falsification of the content or appearance of this report is unlawful and offenders may be prosecuted to the fullest extent of the law.

## Test Report

No. EC405726800

Date: Mar 20 2007

Page 5 of 5

Sample photo:

# EC405726800 (Sample 1)



SGS authenticate the photo on original report only

\*\*\* End Of Report \*\*\*

This document is issued by the Company subject to its General Conditions of Service printed overleaf or available on request and accessible at [www.sgs.com](http://www.sgs.com). Attention is drawn to the limitations of liability, indemnification and jurisdictional issues defined therein. Unless otherwise stated: (a) the results shown in this document refer only to the sample(s) tested and (b) such sample(s) are retained for 30 days only. This document cannot be reproduced except in full, without prior approval of the Company. Any unauthorized alteration, forgery or falsification of the content or appearance of this report is unlawful and offenders may be prosecuted to the fullest extent of the law.





## Test Report

No. EC405726400

Date: Mar 19 2007

Page 1 of 5

DICGU ELECTRONICS CO., LTD.  
LISHAN SOUTH RD  
SHIWAN, BOLUO  
HUI ZHOU, GUANGDONG  
CHINA

The following sample was submitted and identified on behalf of the client as :  
PBT + GF30%

SGS Job No. : 1059344  
SGS Reference No : SZ10287687-4.1  
Lot No : H87126  
Supplier : NAN YA PLASTICS CORPORATION  
Date of Sample(s) Received : MAR 13 2007  
Testing Period : MAR 13-192007

Test Requested/  
Test Method

- In accordance with RoHS Directive 2002/95/EC, and its amendment directives.  
With reference to IEC 62321 (Ed. 1) 111/54/CDV. Procedures for the Determination of Levels of Regulated Substances in Electrotechnical Products.
- Determination of Cadmium by ICP/ AAS.  
Determination of Lead by ICP/ AAS.  
Determination of Mercury by ICP/ AAS.
- Determination of Hexavalent Chromium by colorimetric method (UV-VIS).
- Determination of PBBs and PBDEs by GC-MS.
- For other test:  
To determine Tetrabromobisphenol-A (TBBP-A) content in the submitted sample according to SGS In-house method (CTS-SL-229-1), by GC-MS Technique.

This document is issued by the Company subject to its General Conditions of Service printed overleaf or available on request and accessible at [www.sgs.com](http://www.sgs.com). Attention is drawn to the limitations of liability, indemnification and jurisdictional issues defined therein. Unless otherwise stated: (a) the results shown in this document refer only to the sample(s) tested and (b) such sample(s) are retained for 30 days only. This document cannot be reproduced except in full, without prior approval of the Company. Any unauthorized alteration, forgery or falsification of the content or appearance of this report is unlawful and offenders may be prosecuted to the fullest extent of the law.



## Test Report

No. EC405726400

Date: Mar 19 2007

Page 2 of 5

Test Results : Please refer to next page.

Conclusion : - Based on the performed tests on submitted sample, the results comply with the RoHS Directive 2002/95/EC and its subsequent amendments.

Signed for and on behalf of  
SGS Hong Kong Ltd.

Wan Chi Wai Leo  
Technical Manager

This document is issued by the Company subject to its General Conditions of Service printed overleaf or available on request and accessible at [www.sgs.com](http://www.sgs.com). Attention is drawn to the limitations of liability, indemnification and jurisdictional issues defined therein. Unless otherwise stated: (a) the results shown in this document refer only to the sample(s) tested and (b) such sample(s) are retained for 30 days only. This document cannot be reproduced except in full, without prior approval of the Company. Any unauthorized alteration, forgery or falsification of the content or appearance of this report is unlawful and offenders may be prosecuted to the fullest extent of the law.



## Test Report

No. EC405726400

Date: Mar 19 2007

Page 3 of 5

### Test Results:

Test results by chemical method (Unit : mg/kg)

	1	MDL	Limit
Cadmium (Cd)	n.d.	2	100
Lead (Pb)	23	2	1000
Mercury (Hg)	n.d.	2	1000
Hexavalent Chromium (CrVI) by colorimetric method	n.d.	2	1000
Sum of PBBs (Mono to Deca)	n.d.	-	1000
Monobromobiphenyl	n.d.	5	
Dibromobiphenyl	n.d.	5	
Tribromobiphenyl	n.d.	5	
Tetrabromobiphenyl	n.d.	5	
Pentabromobiphenyl	n.d.	5	
Hexabromobiphenyl	n.d.	5	
Heptabromobiphenyl	n.d.	5	
Octabromobiphenyl	n.d.	5	
Nonabromobiphenyl	n.d.	5	
Decabromobiphenyl	n.d.	5	
Sum of PBDEs (Note 4)	n.d.	5	
Sum of PBDEs (Mono to Deca)	n.d.	-	1000
Dibromodiphenyl ether	n.d.	5	
Monobromodiphenyl ether	n.d.	5	
Tribromodiphenyl ether	n.d.	5	
Tetrabromodiphenyl ether	n.d.	5	
Pentabromodiphenyl ether	n.d.	5	
Hexabromodiphenyl ether	n.d.	5	
Heptabromodiphenyl ether	n.d.	5	
Octabromodiphenyl ether	n.d.	5	
Nonabromodiphenyl ether	n.d.	5	
Decabromodiphenyl ether	n.d.	5	

### Note :

- (1) mg/kg = ppm
- (2) MDL = Method Detection Limit
- (3) n.d. = Not Detected
- (4) Sum of Mono to NonaBDE & according to 2005/717/EC DecaBDE is exempt.
- (5) - = Not Regulated
- (6) -- = Not Conducted

This document is issued by the Company subject to its General Conditions of Service printed overleaf or available on request and accessible at [www.sgs.com](http://www.sgs.com). Attention is drawn to the limitations of liability, indemnification and jurisdictional issues defined therein. Unless otherwise stated: (a) the results shown in this document refer only to the sample(s) tested and (b) such sample(s) are retained for 30 days only. This document cannot be reproduced except in full, without prior approval of the Company. Any unauthorized alteration, forgery or falsification of the content or appearance of this report is unlawful and offenders may be prosecuted to the fullest extent of the law.



## Test Report

No. EC405726400

Date: Mar 19 2007

Page 4 of 5

### Tetrabromobisphenol-A (TBBP-A)

	<u>CAS-No.</u>	<u>1</u>	<u>DL</u>
Tetrabromobisphenol-A (TBBP-A)	79-94-7	n.d.	5

#### Note :

- (1) Unit: mg/kg = ppm
- (2) DL = Detection Limit
- (3) n.d. = Not Detected

#### Sample Description

1 Ivory Plastic Pellet

This document is issued by the Company subject to its General Conditions of Service printed overleaf or available on request and accessible at [www.sgs.com](http://www.sgs.com). Attention is drawn to the limitations of liability, indemnification and jurisdictional issues defined therein. Unless otherwise stated: (a) the results shown in this document refer only to the sample(s) tested and (b) such sample(s) are retained for 30 days only. This document cannot be reproduced except in full, without prior approval of the Company. Any unauthorized alteration, forgery or falsification of the content or appearance of this report is unlawful and offenders may be prosecuted to the fullest extent of the law.

Sample photo:

## EC405726400 (Sample 1)



SGS authenticate the photo on original report only

\*\*\* End Of Report \*\*\*

This document is issued by the Company subject to its General Conditions of Service printed overleaf or available on request and accessible at [www.sgs.com](http://www.sgs.com). Attention is drawn to the limitations of liability, indemnification and jurisdictional issues defined therein. Unless otherwise stated: (a) the results shown in this document refer only to the sample(s) tested and (b) such sample(s) are retained for 30 days only. This document cannot be reproduced except in full, without prior approval of the Company. Any unauthorized alteration, forgery or falsification of the content or appearance of this report is unlawful and offenders may be prosecuted to the fullest extent of the law.



# SGS

Top: 郭克 24C

1/3

## Test Report

No.: GZ0701007516/CHEM

Date: JAN 22, 2007

Page 1 of 3

DONGGUAN CITY GAOBU TUXING METAL FACTORY  
1, LANE, XIAN SHA PRECINCT, GAOBU TOWN, DONGGUAN CITY

The following sample(s) was/were submitted and identified on behalf of the applicant as 铁料

SGS Ref No. : GZ10230542EC-2.2  
Sample Receiving Date : JAN 16, 2007  
Testing Period : JAN 16, 2007 TO JAN 22, 2007

Test Requested : To determine the Cadmium, Lead, Mercury & Hexavalent Chromium content in the submitted sample.

Test Method : With reference to IEC 62321 Ed.1 111/54/CDV  
Procedures for the Determination of Levels of Regulated Substances in Electrotechnical Products  
(1) Determination of Cadmium by ICP.  
(2) Determination of Lead by ICP.  
(3) Determination of Mercury by ICP.  
(4) Determination of Hexavalent Chromium by Colorimetric Method.

Test Results : Please refer to next page

Signed for and on behalf of  
SGS-CSTC Ltd.

*Jerry Yang*  
Jiang YongPing, Terry  
Sr. Engineer



This Test Report is issued by the Company subject to its General Conditions of Service printed overleaf or available on request and accessible at [www.sgs.com](http://www.sgs.com). Attention is drawn to the limitations of liability, indemnification and jurisdictional issues defined therein. Unless otherwise stated the results shown in this test report refer only to the sample(s) tested. This test report cannot be reproduced, except in full, without prior written permission of the Company. Any unauthorized alteration, forgery or falsification of the content or appearance of this report is unlawful and offenders may be prosecuted to the fullest extent of the law.

SGS-CSTC (Guangdong) Technical Services Co., Ltd.  
Guangzhou Branch, China

188 Xinhua Road, SCIENCE PARK, Guangzhou Economic & Technology Development Zone, Guangzhou, China 510663  
中国·广州·经济技术开发区科学城科珠路188号 邮编: 510663

t (86-20) 82155555  
t (86-20) 82155555

f (86-20) 82075125  
f (86-20) 82075125

www.cn.sgs.com  
sgs.china@sgs.com

GZCM 980254

14 JAN 2007 10:51 AM

HP

PRX NO.: 075986412633

FROM:



Test results by chemical method (Unit: mg/kg)

Test Item(s)	Method (refer to)	No.1	MDL
Cadmium(Cd)	(1)	N.D.	2
Lead (Pb)	(2)	5	2
Mercury (Hg)	(3)	N.D.	2
Hexavalent Chromium (CrVI) by boiling water extraction	(4)	Negative	See Note 4

Test Part Description:

No.1 Silver-gray metal sheet

Note: 1. mg/kg = ppm

2. N.D. = Not Detected (< MDL)

3. MDL = Method Detection Limit

4. Spot-test:

Negative = Absence of CrVI coating, Positive = Presence of CrVI coating;

(The tested sample should be further verified by boiling-water-extraction method if the spot test result cannot be confirmed.)

**Boiling-water-extraction:**

Negative = Absence of CrVI coating

Positive = Presence of CrVI coating; the detected concentration in boiling-water-extraction solution is equal or greater than 0.02 mg/kg with 50 cm<sup>2</sup> sample surface area.

COPY



This Test Report is issued by the Company subject to its General Conditions of Service printed overleaf or available on request and accessible at [www.sgs.com](http://www.sgs.com). Attention is drawn to the limitations of liability, indemnification and jurisdictional issues defined therein. Unless otherwise stated the results shown in this test report refer only to the sample(s) tested. This test report cannot be reproduced, except in full, without prior written permission of the Company. Any unauthorized alteration, forgery or falsification of the content or appearance of this report is unlawful and offenders may be prosecuted to the fullest extent of the law.



SGS-CTI Standards Technical Services Co., Ltd.  
Guangzhou Branch - Chemical Laboratory

19th Floor, Road 100, Guangzhou Science and Technology Park, Guangzhou, China 510663  
中国·广州·经济技术开发区科学城科珠路198号 邮编: 510663

t (86-20) 82155555  
t (86-20) 82155555

f (86-20) 82075125  
f (86-20) 82075125

www.cn.sgs.com  
e [sgs.china@sgs.com](mailto:sgs.china@sgs.com)

GZCM 980253

# SGS

3/3

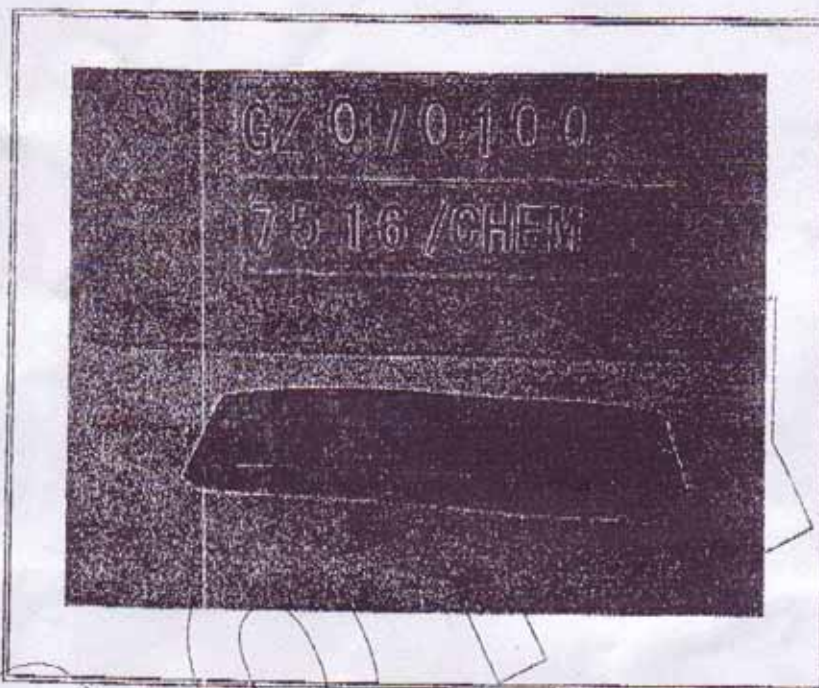
## Test Report

No.: GZ0701007516/CHEM

Date: JAN 22, 2007

Page 3 of 3

Sample photo :



SGS authenticate the photo on original report only

\*\*\* End of Report \*\*\*



This Test Report is issued by the Company subject to its General Conditions of Service printed overleaf or available on request and accessible at [www.sgs.com](http://www.sgs.com). Attention is drawn to the limitations of liability, indemnification and jurisdictional issues defined therein. Unless otherwise stated the results shown in this test report refer only to the sample(s) tested. This test report cannot be reproduced, except in full, without prior written permission of the Company. Any unauthorized alteration, forgery or falsification of the content or appearance of this report is unlawful and offenders may be prosecuted to the fullest extent of the law.

SGS-AS, Shanghai Technical Service Co., Ltd.  
P.O. Box 111, 20120 Shanghai, China

16th Floor, Road 100, Pudong New Area, Shanghai, China 201200  
中国·上海·浦东新区世纪大道100号 16楼 邮编: 201200

1 (86-20) 82155555  
1 (86-20) 82155555

1 (86-20) 82075125  
1 (86-20) 82075125

GZCM 978473

[www.cn.sgs.com](http://www.cn.sgs.com)  
• [sgs.china@sgs.com](mailto:sgs.china@sgs.com)





## Test Report

No.: GZ0701004459/CHEM

Date: JAN 16, 2007

Page 1 of 3

LIGHTWAY INTERNATIONAL CO.,LTD.

NO.1, LIJING RD. SHENZHEN EXPORT PROCESSING ZONE, PING SHAN TOWN, LONGGANG, SHENZHEN

The following sample(s) was/were submitted and identified on behalf of the applicant as BRASS STRIPS

Client Reference: Item/Style/Ref. No.: JISH 3110 C2680

SGS Ref No. : SZ10220417-3.1  
Country of Origin : POLAND  
Sample Receiving Date : JAN 10, 2007  
Testing Period : JAN 10, 2007 TO JAN 16, 2007

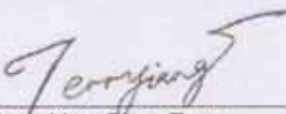
Test Requested : In accordance with the RoHS Directive 2002/95/EC, and its amendment directives.

Test Method : With reference to IEC 62321 Ed.1 111/54/CDV  
Procedures for the Determination of Levels of Regulated Substances in Electrotechnical Products  
(1) Determination of Cadmium by ICP.  
(2) Determination of Lead by ICP&AAS.  
(3) Determination of Mercury by ICP.  
(4) Determination of Hexavalent Chromium by Colorimetric Method.

Test Results : Please refer to next page.

Conclusion : Based on the performed tests on submitted sample(s), the results **comply with** the RoHS Directive 2002/95/EC and its subsequent amendments.

Signed for and on behalf of  
SGS-CSTC Ltd.

  
Jiang YongPing, Terry  
Sr. Engineer



The release of this electronic report by SGS RSTS Database system is subject to the terms and conditions of SGS RSTS Database service and those applied to the original hardcopy report. For the purpose of your reference only, this electronic copy is in accordance with the issued report. User of the electronic report shall note that SGS authenticates only the electronic report directly downloaded from SGS RSTS Database system.





## Test Report

No.: GZ0701004459/CHEM

Date: JAN 16, 2007

Page 2 of 3

Test results by chemical method (Unit: mg/kg)

Test Item(s):	Method (refer to)	No.1	MDL	RoHS Limit
Cadmium(Cd)	(1)	N.D.	2	100
Lead (Pb)	(2)	82	2	1000
Mercury (Hg)	(3)	N.D.	2	1000
Hexavalent Chromium (CrVI) by boiling water extraction	(4)	Negative	See Note 4	#

### Test Part Description:

No.1 Brassy metal sheet

Note : 1. mg/kg = ppm

2. N.D. = Not Detected (< MDL)

3. MDL = Method Detection Limit

#### 4. Spot-test:

Negative = Absence of CrVI coating, Positive = Presence of CrVI coating;

(The tested sample should be further verified by boiling-water-extraction method if the spot test result cannot be confirmed.)

#### Boiling-water-extraction:

Negative = Absence of CrVI coating

Positive = Presence of CrVI coating; the detected concentration in boiling-water-extraction solution is equal or greater than 0.02 mg/kg with 50 cm<sup>2</sup> sample surface area.

5. # = Positive indicates the presence of CrVI on the tested areas and result be regarded as conflict with RoHS requirement.

Negative indicates the absence of CrVI on the tested areas and result be regarded as no conflict with RoHS requirement.



**Test Report**

No.: GZ0701004459/CHEM

Date: JAN 16, 2007

Page 3 of 3

Sample photo :



SGS authenticate the photo on original report only

\*\*\* End of Report \*\*\*



## Test Report

No.: GZ0703040040/CHEM

Date: MAR 28, 2007

Page 1 of 3

DICGU ELECTRONICS CO., LTD.

LISHAN SOUTH RD., SHIWAN, BOLUO, HUI ZHOU, GUANG DONG, CHINA

The following sample(s) was/were submitted and identified on behalf of the applicant as SWPB

Client Reference: AB10801 / 20070309

SGS Ref No. : SZ10302159-9.3  
 Supplier : UNION SPRING METAL CO., LTD  
 Sample Receiving Date : MAR 22, 2007  
 Testing Period : MAR 22, 2007 TO MAR 28, 2007

Test Requested : In accordance with the RoHS Directive 2002/95/EC, and its amendment directives.

Test Method : With reference to IEC 62321 Ed.1 111/54/CDV  
 Procedures for the Determination of Levels of Regulated Substances in Electrotechnical Products  
 (1) Determination of Cadmium by ICP.  
 (2) Determination of Lead by ICP.  
 (3) Determination of Mercury by ICP.  
 (4) Determination of Hexavalent Chromium by Colorimetric Method.

Test Results : Please refer to next page.

Conclusion : Based on the performed tests on submitted sample(s), the results **comply with the RoHS**  
 Directive 2002/95/EC and its subsequent amendments.

Signed for and on behalf of  
 SGS-CSTC Ltd.

  
 Jiang YongPing, Terry  
 Sr. Engineer

This Test Report is issued by the Company subject to its General Conditions of Service printed overleaf or available on request and accessible at [www.sgs.com](http://www.sgs.com). Attention is drawn to the limitations of liability, indemnification and jurisdictional issues defined therein. Unless otherwise stated the results shown in this test report refer only to the sample(s) tested. This test report cannot be reproduced, except in full, without prior written permission of the Company. Any unauthorized alteration, forgery or falsification of the content or appearance of this report is unlawful and offenders may be prosecuted to the fullest extent of the law.



Test results by chemical method (Unit: mg/kg)

Test Item(s):	Method (refer to)	No.1	MDL	RoHS Limit
Cadmium(Cd)	(1)	N.D.	2	100
Lead (Pb)	(2)	5	2	1000
Mercury (Hg)	(3)	N.D.	2	1000
Hexavalent Chromium (CrVI) by boiling water extraction	(4)	Negative	See Note 4	#

### Test Part Description:

No.1 Silver-grey metal spring

Note : 1. mg/kg = ppm

2. N.D. = Not Detected (< MDL)

3. MDL = Method Detection Limit

#### 4. Spot-test:

Negative = Absence of CrVI coating, Positive = Presence of CrVI coating;

(The tested sample should be further verified by boiling-water-extraction method if the spot test result cannot be confirmed.)

#### Boiling-water-extraction:

Negative = Absence of CrVI coating

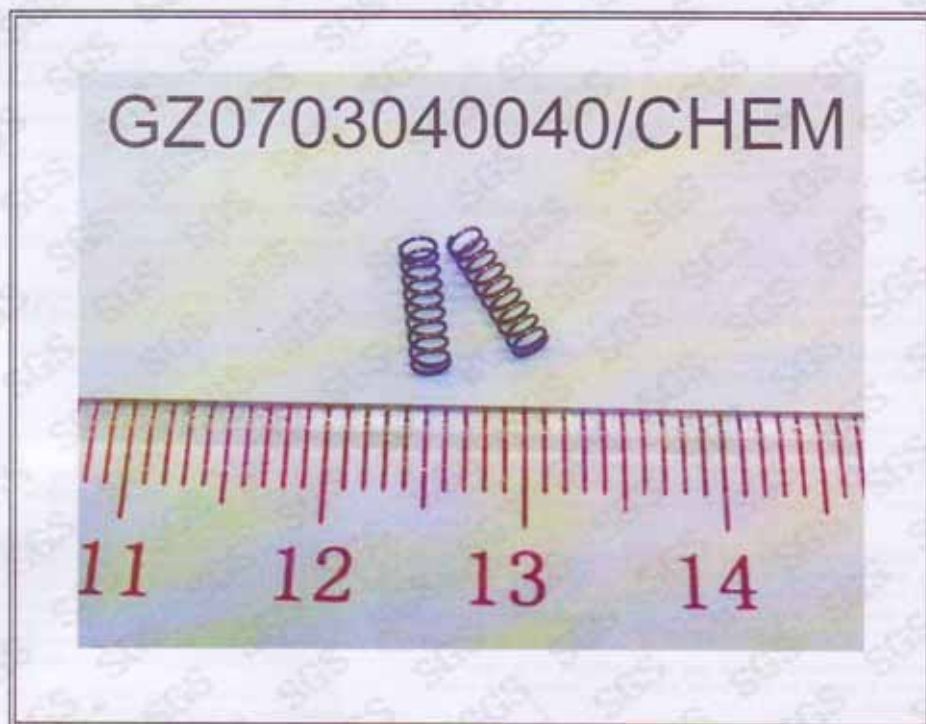
Positive = Presence of CrVI coating; the detected concentration in boiling-water-extraction solution is equal or greater than 0.02 mg/kg with 50 cm<sup>2</sup> sample surface area.

5. # = Positive indicates the presence of CrVI on the tested areas and result be regarded as conflict with RoHS requirement.

Negative indicates the absence of CrVI on the tested areas and result be regarded as no conflict with RoHS requirement.

This Test Report is issued by the Company subject to its General Conditions of Service printed overleaf or available on request and accessible at [www.sgs.com](http://www.sgs.com). Attention is drawn to the limitations of liability, indemnification and jurisdictional issues defined therein. Unless otherwise stated the results shown in this test report refer only to the sample(s) tested. This test report cannot be reproduced, except in full, without prior written permission of the Company. Any unauthorized alteration, forgery or falsification of the content or appearance of this report is unlawful and offenders will be prosecuted to the fullest extent of the law.

Sample photo :



SGS authenticate the photo on original report only

\*\*\* End of Report \*\*\*

This Test Report is issued by the Company subject to its General Conditions of Service printed overleaf or available on request and accessible at [www.sgs.com](http://www.sgs.com). Attention is drawn to the limitations of liability, indemnification and jurisdictional issues defined therein. Unless otherwise stated the results shown in this test report refer only to the sample(s) tested. This test report cannot be reproduced, except in full, without prior written permission of the Company. Any unauthorized alteration, forgery or falsification of the content or appearance of this report is unlawful and offenders will be prosecuted to the fullest extent of the law.