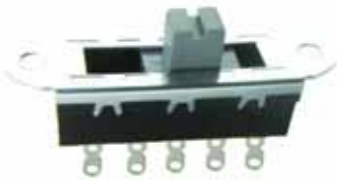




DICGU ELECTRONICS CO.,LTD.

VS011 Series SWITCH (Voltage select Switches)



VS011-3 series

MATERIALS

CASE :SPCC

Lower Base: NILONG(UL94V-0)

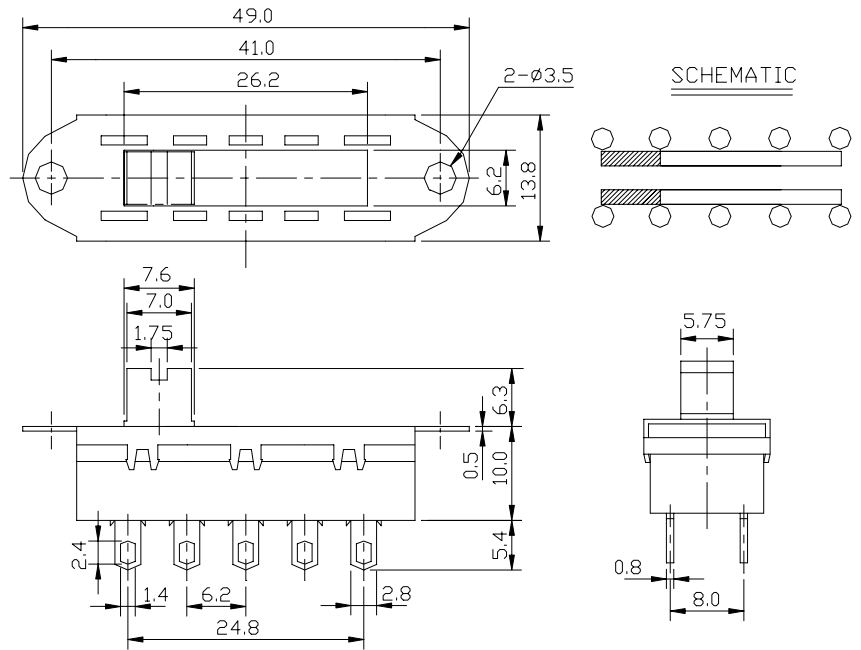
Actuating stem:PBT(UL94V-0)

Change plate:Copper(plating silver)

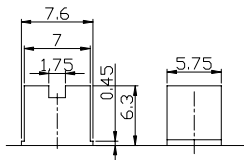
Terminals:copper(plating silver)

Sleeve: NILONG(UL94V-0)

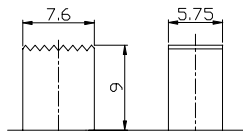
Spring:SWC/SUS304



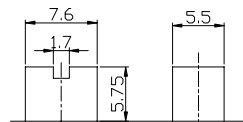
VS011-3 SERIES ACTUATOR STEM OPTIONS



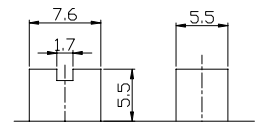
VS011-1-02



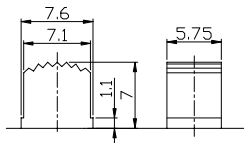
VS011-1-04



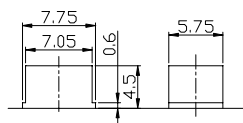
VS011-1-05



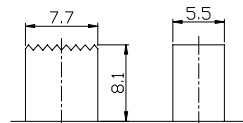
VS011-1-06



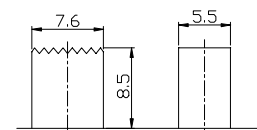
VS011-1-07



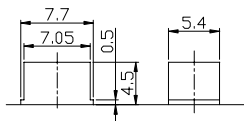
VS011-1-08



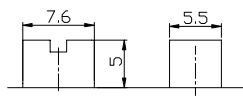
VS011-1-09



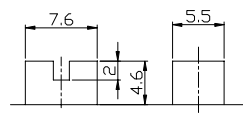
VS011-1-11



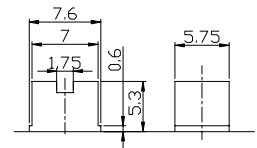
VS011-1-13



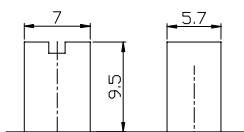
VS011-1-14



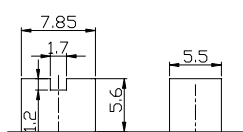
VS011-1-15



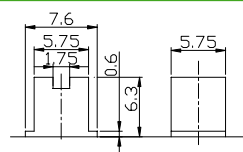
VS011-1-16



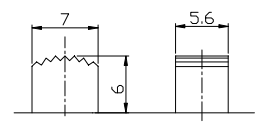
VS011-1-17



VS011-1-18

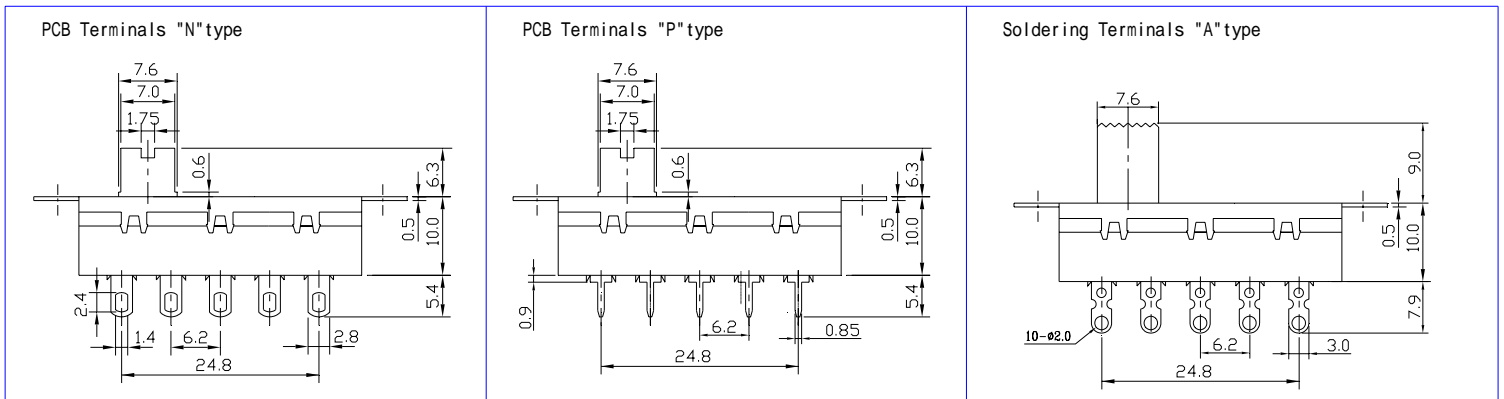


VS011-1-19



VS011-1-20

VS011-3 TERMINAL OPTIONS mm(Inches)



VS011-3 COVER TYPE OPTIONS

